



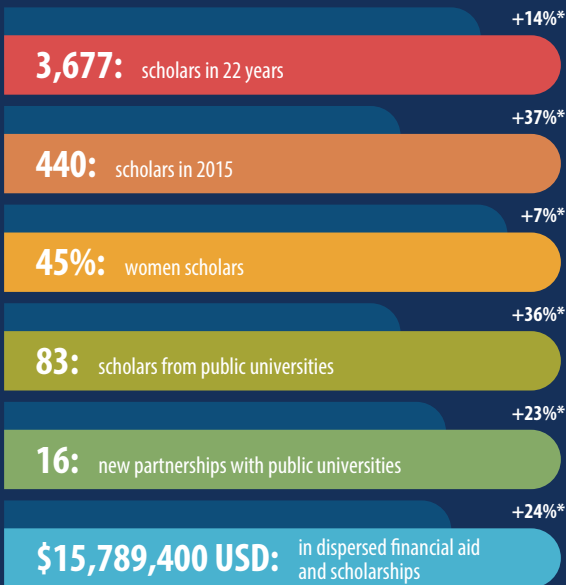
FUNED

Fundación Mexicana para la Educación,
la Tecnología y la Ciencia

2015: HIGHEST RECORD YEAR IN FULFILLING OUR MISSION TOGETHER WE CAN DO MORE

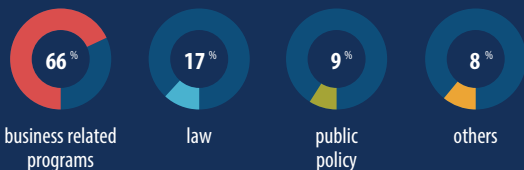
FUNED: Contributes to the professional development of future Mexican leaders, through financial support to study a master's degree in one of the best programs in the world, with the goal to boost the development of society and Mexico.

Because of the great **CONTRIBUTION AND PARTICIPATION** of our strategic allies FUNED has achieved several milestones:



*In relation to the year 2014

AREAS OF STUDY 2015



98% of our scholars meet their commitment with FUNED in time and manner, thus contributing to the professional development of other students.



FUNED

Fundación Mexicana para la Educación,
la Tecnología y la Ciencia

WHY DOES FUNED SUPPORT MASTER DEGREE STUDIES?

Master degrees propel the economic and social development of countries.



In order to be more competitive and reduce the gap between Mexico and other emerging economies, Mexico requires that 5,000 students pursue master degrees in top universities and the best programs around the world.

FUNED ALUMNI BENEFITS



• **73%** are employed in less than three months



• **79%** tripled their annual salary

• **78%** receive promotions in their jobs

• **83%** consider the support they received from FUNED was a determinant to complete their studies



VOLUNTEERING

As a direct result of FUNED's mentoring program, the future of more than 300 undergraduate students will have a positive impact when they are accepted to top universities around the world.



• **6,500,000 MXP** in overhead savings.

• **509** interviews for prospect scholars



• **6,000** hours donated



• **20** board members

• **16** volunteers that participate in the interviewing panels

• **366** mentors

CONTACT

- Funed
- @FUNED_MX
- www.funedx.org
- Funed Mx



CONACYT

Consejo Nacional de Ciencia y Tecnología



Nacional Monte de Piedad



**INSTITUCIONALIDAD
Y TRANSPARENCIA**

Cemefi